



www.tradexper.com



**ON-VEHICLE AND
TANKER EQUIPMENT**

TRADEXPER

ABOUT US

At this times, many foreign trade companies focus on finding and exporting products. As Tradexper, we aim to supply you with the most suitable service or product by conducting specific research on your demands and your sector with our professional team. In this context, we prefer to serve in sectors in which we are experienced. Many companies may encounter wrong products or services in their international procurement processes. Tradexper team aims to help you with optimum efficiency in the products and services we have researched for you, based on your company-specific criteria (cost, quality, time, technical features). While building a bridge between you and your supplier, it acts professionally like a buyer company, not like an intermediary company.

TRADEXPER IS YOUR
BRANCH IN TURKEY.



TRADEXPER



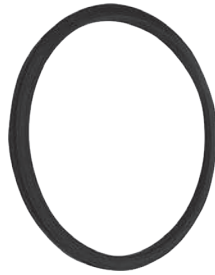
CEMENT BULKER TRAILER SPARE PARTS

TRADEXPER



MANHOLE COVER COMPLETE ALUMINUM & ALUMINUM TOP COVER IRON LOWER BASE

ST37 ALUMINUM SHEET
(5mm & 4mm), TOP
COVER 22MM ALUMINUM,
CEMENT RESISTANT
NITRILE GASKET, 500MM
DIAMETER, PERMEABILITY
AND PRESSURE TEST
CONDUCTED BY 3 BAR



MANHOLE COVER SEALING

400mm & 450mm
& 500mm
It is specially produced
resistant to cement.



SAFETY VALVE MALE & FEMALE

The product is made of
aluminium and serves to
discharge excess air during
unloading into the silo. The
system is set to 1.5 bar and
can be manually adjusted
to the desired bar level.



YELLOW & RED AERATION HOSE

Robust, durable and
lightweight physical
structure, Special
polyurethane coated
airtight surface, Resistant to
temperature and pressure,
Flexible and easy to use,
Operating temperature
30°C to 80°C



BULK TRAILER DISCHARGE HOSE

Area of Use: easily
transportable, pneumatic
and hydraulic transport
of abrasive materials
such as cement, sand.

Underlay: Synthetic and
natural rubber mixture,
abrasion resistant, black,
smooth **Reinforcement:**
High strength cord fabric,
embedded copper wire

Top Coat: SBR, black,
resistant to friction and
climatic conditions
-30 °C / +70 °C



CHECK VALVE- BRASS

Brass Material
2" & 1/2" Options



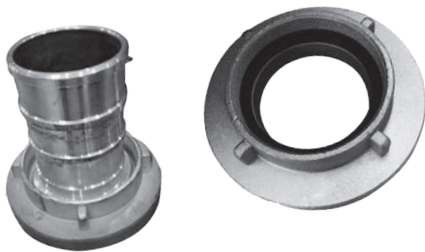
**CEMENT BULKER TRAILER
VALVES**

- 4" BUTTERFLY VALVE
- 4" BALL VALVE
- 4" PINCH VALVE



VALVES PARTS

- 4" PINCH VALVE RUBBERS
- 4" BALL VALVE INNER CORE
- 4" BALL VALVE
MAINTENANCE KIT



ALUMINUM COUPLINGS

- 4" & 3" GERMAN TYPE
ALUMINIUM STORZ
COUPLING & ADAPTOR



MANOMETER

- 1 TO 16 BAR
CONFIGURATIONS



**4" BOTTOM LOAD
& UNLOAD VALVE**

ETIAL 171 ALUMINUM BODY,
-10°C to +60°C OPERATING
TEMPERATURE RANGE,
VITON (FLUORINATED
RUBBER) GASKET,
INOX CONNECTION
ELEMENTS, PERMEABILITY
AND PRESSURE TEST
CONDUCTED



**4" BOTTOM VALVE
DUST COVER**

ETIAL 171 ALUMINUM BODY
BRASS MATERIAL
CONNECTION CLAMP,
SUITABLE FOR 4" VALVE



ALUMINUM CAMLOCK

ETIAL 171 ALUMINUM BODY
2" , 3" , 4" , MANUFACTURING
A Type, B Type and C Type,
BRASS MATERIAL CONNECTION
CLAMP



**VAPOUR
RECOVERY VALVE**

ETIAL 171 ALUMINUM
BODY, VITON
(FLUORINATED
RUBBER) GASKET,
INOX CONNECTION
ELEMENTS, PERMEABILITY
AND PRESSURE TEST
CONDUCTED



**REVERSE PNEUMATIC
VAPOUR VALVE**

ETIAL 171 ALUMINUM
BODY, VITON
(FLUORINATED
RUBBER) GASKET,
INOX CONNECTION
ELEMENTS, PERMEABILITY
AND PRESSURE TEST
CONDUCTED



**CAMLOCK COUPLING
ADAPTOR**

ETIAL 171 ALUMINUM
BODY
BRASS MATERIAL
CONNECTION CLAMP, 4"
X 3" CONFIGURATION



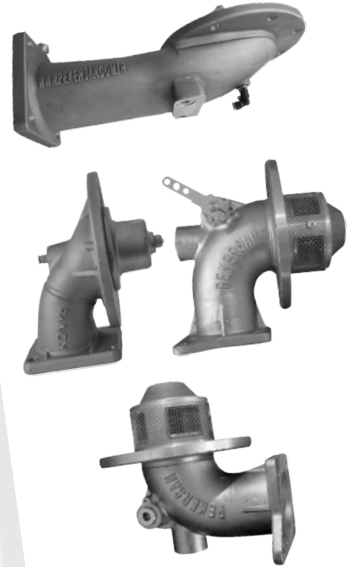
**CAMLOCK COUPLING
ADAPTOR**

ETIAL 171 ALUMINUM BODY
BRASS MATERIAL
CONNECTION CLAMP, 4" X
4" CONFIGURATION



**VAPOUR RECOVERY
ADAPTER**

ETIAL 171 ALUMINUM BODY
VITON (FLUORINATED
RUBBER) GASKET,
INOX CONNECTION
ELEMENTS, PERMEABILITY
AND PRESSURE TEST
CONDUCTED



BOTTOM VALVES

ETIAL 171 ALUMINUM BODY
VITON (FLUORINATED
RUBBER) GASKET, INOX
CONNECTION ELEMENTS,
3" and 4" CONFIGURATIONS,
PERMEABILITY AND PRESSURE
TEST CONDUCTED



ALUMINUM FUEL GAUGE

COMPLETE
ALUMINUM BODY
GAUGE DISPLAY LANGUAGE
AS OPTIONS



TUBE CAP

ETIAL 171 ALUMINUM BODY, WITH LOCK, 3" and 4"
CONFIGURATIONS



**PV VENT VALVE
EXPANSION SET**
IN THE TANK IS
PRESSURIZED TO $09 \pm$
 02 kPa VACUUMMING
 03 kPa, ETIAL 171
ALUMINUM BODY,
VITON (FLUORINATED
RUBBER) GASKET,
INOX CONNECTION
ELEMENTS, PERMEABILITY
AND PRESSURE TEST
CONDUCTED



**2" MUSHROOM
BREATHER VENT**
COMPLETE ALUMINUM
BODY
NBR GASKET, INOX
CONNECTION ELEMENTS,
PRESSURE TEST
CONDUCTED



**20" MANHOLE COVER
WITH 24 HOLE**
ST37 SHEET METAL,
GALVANIZED, DIMENSION
500MM, BREATHER
CAP, WITH PV VENT,
MEASURING STICK
and VAPOUR RECOVER
PLACES, SUITABLE for ADR



**20" MANHOLE COVER ADR 7MM
5186 ALUMINUM**
7MM 5186 ALUMINUM,
DIMENSION 500MM
WITH PV VENT, MEASURING STICK
and VAPOUR RECOVER PLACES,
SUITABLE for ADR



**20" ALUMINUM MANHOLE
COVER WITH CLAMP**
ST37 SHEET METAL,
DIMENSION 500MM
BREATHER CAP, SUITABLE for ADR



20" 6MM ALM MANHOLE

16MM ALUMINUM TOP, DIMENSION
500MM, 10 CM BOTTOM METAL
BASE, BREATHER CAP, WITH PV VENT,
MEASURING STICK and VAPOUR
RECOVER PLACES, ETIAL 171
ALUMINUM, 24 HOLE, SUITABLE
FOR ADR



**20" 16MM ALUMINUM
MANHOLE COVER**

6MM ALUMINUM TOP, DIMENSION
500MM, 10 CM BOTTOM METAL
BASE, BREATHER CAP, ETIAL 171
ALUMINUM, 24 HOLE,
SUITABLE FOR ADR

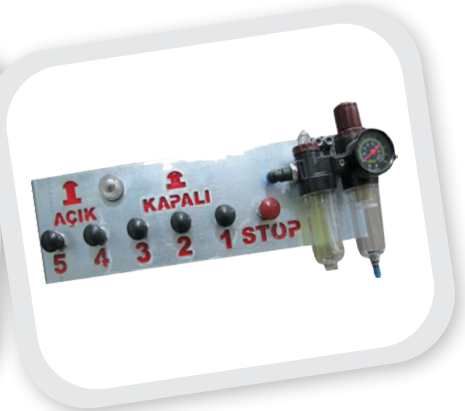


**PNEUMATIC STEAM
VALVE'S BELLOW**

90*90 NBR BELLOW
STEAM CONVERSION TIRE



**NITRILE CONNECTION
GASKETS**



**CONTROL PANEL WITH 5
COMPARTMENTS**

BETWEEN 1 - 10
COMPARTMENT OPTIONS



FUEL TANK TRUCK SPARE PARTS

TRADEXPER



MEASURING STICK
COMPLETE ALUMINUM



**STATIC DISCHARGE
GROUNDING REEL**
COMPLETE ALUMINUM
BODY, 15 METER, 4MM
STEEL WIRE SOPE
COPPER PLIER, MANUEL
STOPPING



GROUNDING SENSOR
USING IN ORDER
TO AVOID
THE ARC



TEN PIN SOCKET
SYSTEM OPERATED BY 12 VOLT
ELECTRICAL
10 PIN SOCKET, LIQUIDPROOF



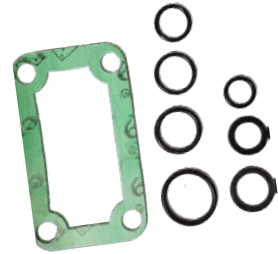
OPTICAL LEVELLER SENSOR
SYSTEM OPERATED BY 12 VOLT
ELECTRICAL
LIQUIDPROOF



2" HYDRAULIC VALVE



3" HYDRAULIC VALVE



GASKET KIT



**HYDRAULIC VALVE
MAINTENANCE KIT**



HYDRAULIC OPERATOR



**LPG TANKER LEVEL
INDICATOR**



MENHOL COVER



OPEN MANHOLE COVER



**LPG LOADING COUPLING
2" & 3" CONFIGURATIONS**



PILOT WHEEL FENDER



WATER TANK



DINING CABINET



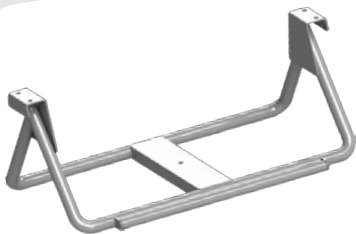
**TRAILER TOOL BOX
LOCKABLE**



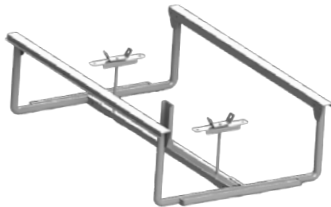
**TRUCK AND TRAILER
ANTI-SPRAY FLAP**



**MARKER LIGHT
HOLDER BAR**



**SPARE WHEEL
CARRIER SINGLE**



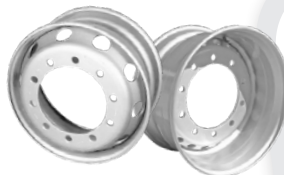
**SPARE WHEEL CARRIER
SINGLE DOUBLE**



**WHEEL CHOCKS
SEMI TRAILER**



KINGPIN



**RIMS FOR
SEMI TRAILER**



**SEMI TRAILER
LANDING GEAR**



SEMI TRAILER AXLE

www.tradexper.com

Konya 2. Organize Sanayi
Büyükkayacak Osb Mah.
Lalehan Cad. No : 23
Selçuklu / Konya
info@tradexper.com

Ali OĞUL
a.ogul@tradexper.com
+90 530 385 93 15
AR - TR - EN

Sabri ALTIN
s.altin@tradexper.com
+90 534 695 21 12
EN - TR

İslamdin SADYROV
i.sadyrov@tradexper.com
+90 530 385 93 14
RU - TR

TRADEXPER